

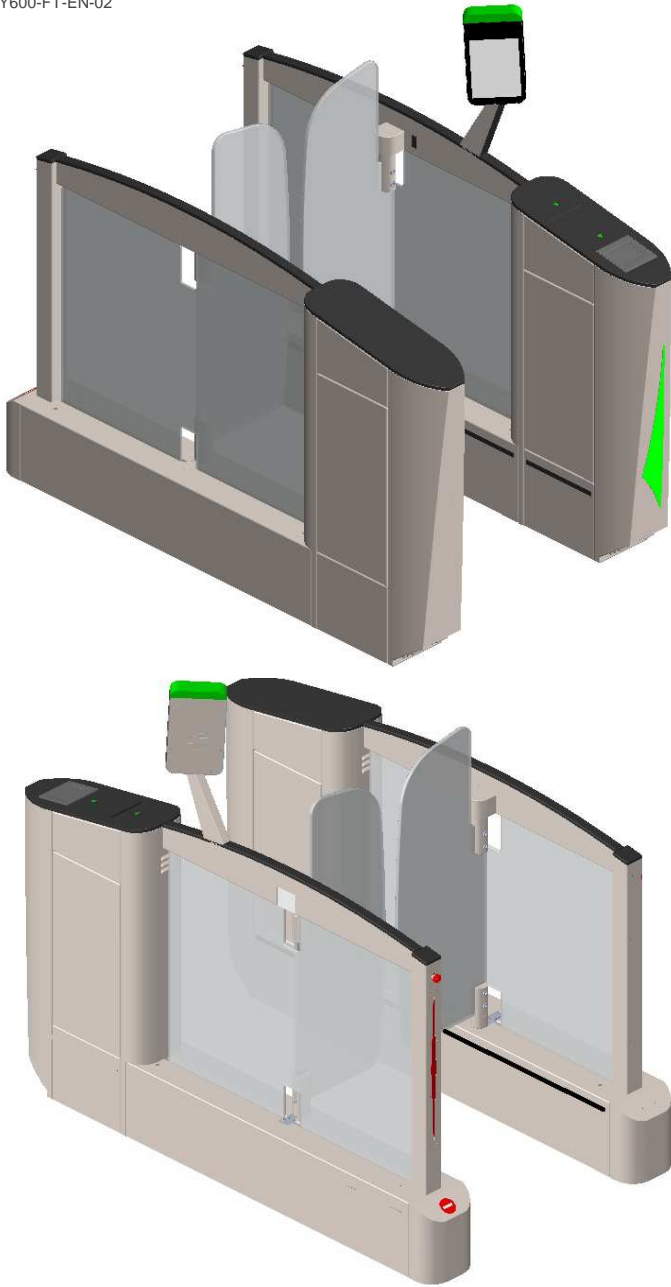
SlimLane SKY

Technical datasheet

SKY600-FT-EN-02

AUTOMATIC
SYSTEMS

Access controlled...
Future secured



DESCRIPTION

1. Sturdy and stable steel frame with RoHS anti-corrosion zinc plating treatment. Visible parts of the frame are in brushed #4 AISI 304L stainless steel
2. Brushed #4 AISI 304L stainless steel housing and panels fastened to the frame for access to the internal components.
3. Kraft compact phenol top surface.
4. Clear, 10 mm thick tempered monolithic glass obstacles, swinging in the direction of user passage.
Clear, 8 mm thick tempered monolithic glass side panel.
5. Electromechanical drive units each consisting of:
 - A brushless DC permanent magnet motor with rugged, flat gearbox.
 - A controller providing progressive accelerations and decelerations of the obstacle, for smooth movement and enhanced user safety.
 - 100Nm brake
6. Logic control board, equipped with ARM CORTEX A8 technology and the Linux operating system, ensuring advanced traffic management. An embedded Web server, accessible by a simple web browser, offering an interface for the configuration of functional gate parameters as well as a complete diagnostic and maintenance tool. The maintenance interface is common to several Automatic Systems product easing the maintenance of the products.
7. Transfer of information from XML-RPC protocol through an Ethernet interface. The SlimLane SKY can be managed by the Smart&Slim operator console.
8. Transfer of information by dry contacts: passage authorization, passage information, fraud, equipment failure ...
9. Orientation pictograms indicating gate and passage status to the user.
10. Proprietary DIRAS detection system, consisting of a high-density matrix of infrared transmitter/receiver photocells beams. It follows user's progression through the gate as well as ensuring their safety during opening/closing of the obstacles. Novel detection algorithms guarantee top-of-class performances for detection of tail gating, close tail gating and crossing frauds.
11. Large front extension to ease customer devices integration

The **SlimLane SKY** double swing door security entrance lane offers a high bidirectional throughput and uncompromising security.

With its **elegant design**, the SlimLane SKY is designed to integrate perfectly into any architectural style. Equipped with high processing capacity and an **exclusive detection system**, the SlimLane SKY guarantees accurate user tracking and prevents any unauthorized use.

The SlimLane SKY is a **modular product** that can be installed as a single or a multi-lane array and can also be combined with the SlimLane SKY wide lane model.

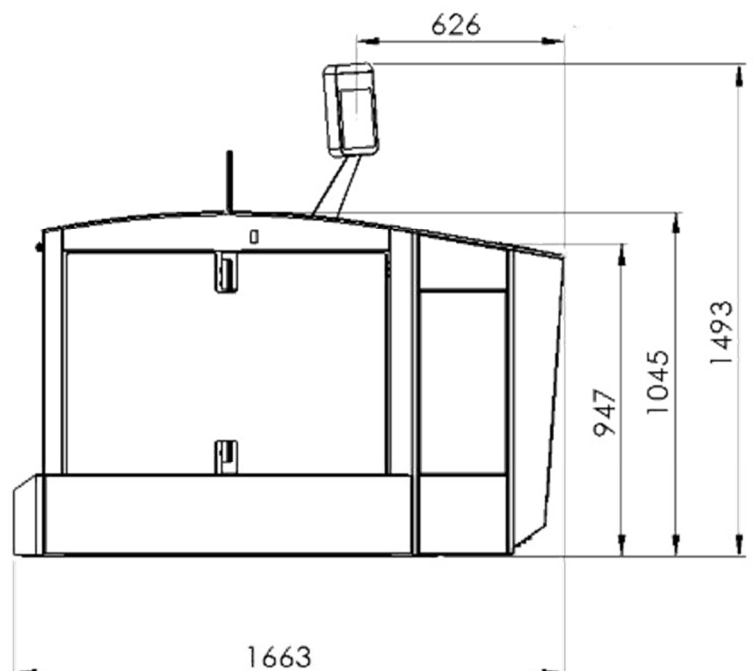
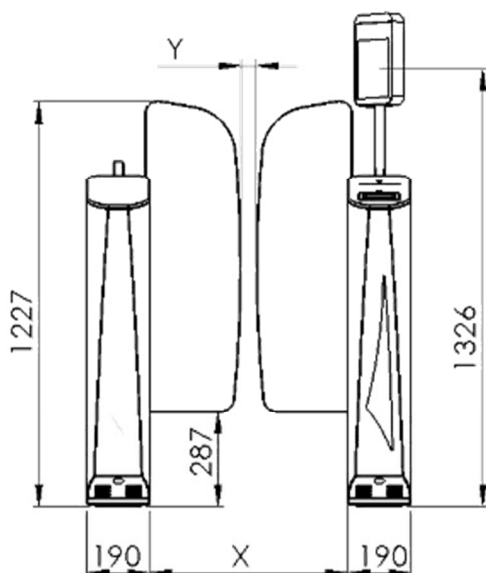
OPTIONAL

STANDARD TECHNICAL CHARACTERISTICS

Electrical supply	Single phase 110 VAC (3A)-240 VAC (5A) (+/-10%) 50/60 Hz + Ground.
Power consumption	Standby: 20 W
	Cycle: 35 W
	Maximum: 80 W
Motors (x2)	24 VDC – nominal output power 86 W
Passageway (L)	600 to 1000 mm
Min opening or closing times	0,7 sec. (Depending of passageway & obstacle material)
Temperature range : operating	+0° to +50°C.
Humidity : Operating	< 95%, no condensation.
MCBF	5,000,000 mean cycles between failures, with recommended maintenance.
Noise level	55 dB to 1m distance
Weight	147 kg (Right cabinet)
	164 kg (Intermediate cabinet)
	143 kg (Left cabinet)
IP	40
CE	Conforms to European standards.

STANDARD DIMENSIONS (MM)

	X	Y
SKY600	500 to 800	50
SKY900	900 to 1000	100



1. Electrical self-opening in case of power loss
2. Egress
3. Passenger information screen
4. Rear Strip led orientation pictogram
5. Fix obstacle enlightening
6. Internal fan for cooling of customer devices
7. Reader pictogram
8. Emergency opening button at rear
9. Polycarbonate V0 obstacle
10. Connectivity kit for Ethernet connection of one or more lanes to the network.

Note: For restrictions on combination of options, please contact us.

WORK TO BE PROVIDED BY THE CUSTOMER

- Bolting the unit to the floor.
- Power supply.
- Cabling between gates in the same array.
- Cabling to any external peripherals.
- Integration of any accessories

Note: Comply with the installation drawing.

PRECAUTIONS FOR USE

- For security reasons, children must be supervised by an adult at all times when in the vicinity of the unit and during passage through the lane.
- A child must absolutely precede the accompanying adult when lane passage is required